



Australian Hammer Supplies Hire  
Unit 3/32 Williamson Road  
Ingleburn  
NSW 2565

CATERPILLAR 330GC

Minor Service

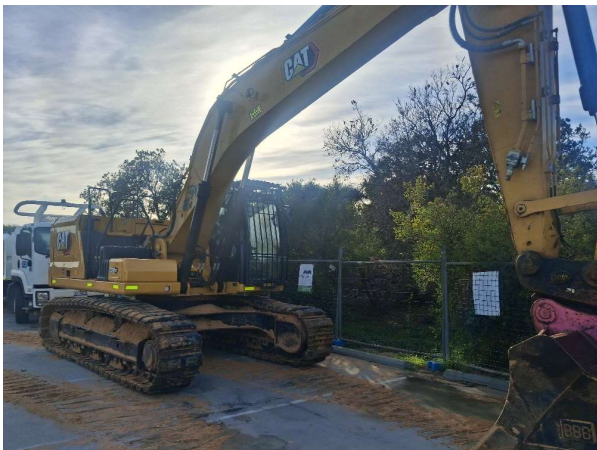
0 15 83 9

Inspection Number	RP055053	Customer No	200000
Serial Number	FEK10527	Customer Name	AUSTRALIAN HAMMER SUPPLIES HIRE
Make	CATERPILLAR	Customer Email	
Model	CAT330 GC	Works Order	RP055053
Equipment Family	30.1-34.9T HYDRAULIC EXCAVATOR	Completed On	11/11/2025 11:45:17 AM
Asset ID	AHSH86	Inspector	Jake Raffen
Location	AUSTRALIAN HAMMER SUPPLIES HIRE Unit 3/32 WILLIAMSON RD  INGLEBURN 2565	PDF Generated On	11/11/2025
		Machine Hours	5230
		Next Meter	5277
Customer			

General Info & Comments

● General Info/Comments

250hr service and repair



## TASK SAFETY INSTRUCTIONS

● 1.1 Wear Correct PPE at all times	NORMAL
● 1.2 All isolation and safe work procedures must be followed	NORMAL
● 1.3 Identify task hazards and controls utilising hierarchy or controls model	NORMAL
● 1.4 Ensure a competent operator and spotter is utilised to move mobile equipment	NORMAL
● 1.5 Ensure all mobile equipment is fundamentally stable	NORMAL
● 1.6 Ensure three points of contact is maintained during access and egress	NORMAL
● 1.7 Ensure acceptable housekeeping standards are maintained at all times	NORMAL

## MACHINE GENERAL RUNNINGCHECKS

● 2.1 Check all work lights, beacon & reverse alarm for operation	PASS
● 2.2 Test all dash warning lights, gauges and audible alarms for correct operation	PASS
● 2.3 Check idle timer for correct shut down operation	N/A
● 2.4 Check operation of all three emergency stop buttons	PASS
● 2.5 Check operation of horn	PASS
● 2.6 Check operation of reverse camera	PASS
● 2.7 Check alternator charge voltage	PASS
● 2.8 Check operation of auto grease system by manually activating timer	N/A
● 2.9 Check fire system control panel for 'Normal'	N/A

## PM FIRE SUPPRESSION SYSTEM

● 5.1 Ensure fire suppression bottle and components are securely mounted and in good condition	N/A
● 5.2 Ensure fire suppression is correctly charged	N/A
● 5.3 Inspect last charge date	DATE:2025-11-11T00:00:00.0000000
● 5.4 Check all fire extinguishers are securely mounted and in good condition	PASS
● 5.5 Check all fire extinguishers are correctly charged	PASS
● 5.6 Inspect last charge date	DATE:2025-11-11T00:00:00.0000000

## PM ENGINE

● 6.1 Perform engine valve set	N/A
● 6.2 Inspect air intake system hoses, pipes, clamps for signs of dirt ingress	PASS
● 6.3 Inspect engine for oil or fuel leaks	PASS
● 6.4 Inspect engine components for missing clamps	PASS

● 6.5 Inspect exhaust systemfor signs of leaks, loose bolts or missing clamps	MONITOR
● 6.6 Inspect turbo for security and signs of leaks	PASS
● 6.7 Inspect condition of exhaust lagging	N/A
● 6.8 Inspect engine mounts for condition and loose hardware	PASS
● 6.9 Inspect alternator mount condition and adjustment	PASS
● 6.10 Inspect wiring condition and security	PASS
● 6.11 Inspect engine belts	MONITOR

#### PM ENGINE COOLINGSYSTEM

● 7.1 Check coolant level	PASS
● 7.2 Check condition of radiator cap	PASS
● 7.3 Check condition of radiator core	PASS
● 7.4 Check cooling systemfor signs of leaks	PASS
● 7.5 Check hose and clamp condition	PASS
● 7.6 Inspect fan condition and operation	PASS
● 7.7 Inspect radiator and fan guard condition	PASS

#### PM SWINGTRANSMISSION

● 8.1 Inspect swing transmission for signs of leaks	PASS
● 8.2 Inspect swing transmission oil level	PASS

#### PM HYDRAULIC SYSTEM

● 9.1 Check hydraulic oil level	PASS
● 9.2 Inspect hydraulic cylinders for leaks and security	PASS
● 9.3 Inspect hydraulic hoses for leaks, damage, security	PASS
● 9.4 Inspect hydraulic pump condition, leaks, security	PASS

- |   |      |
|---|------|
| ● 9.5 Check Pilot Accumulator operation as per OEM Maintenance Procedure - Test Boom Down Functionality with engine off | PASS |
|---|------|

## PM FINAL DRIVES

- |   |      |
|---|------|
| ● 10.1 Inspect LHS final drive mount condition for leaks and security | PASS |
| ● 10.2 Inspect LHS oil level and mag plug condition                   | PASS |
| ● 10.3 Inspect RHS final drive mount condition for leaks and security | PASS |
| ● 10.4 Inspect RHS oil level and mag plug condition                   | PASS |

## PM UNDERCARRIAGE

- |   |      |
|---|------|
| ● 11.1 Inspect LHS track tension                                | PASS |
| ● 11.2 Inspect RHS track tension                                | PASS |
| ● 11.3 Inspect tracks for loose/missing bolts                   | PASS |
| ● 11.4 Inspect load and carrier rollers for signs of leaks      | PASS |
| ● 11.5 Inspect idlers for signs of leaks                        | PASS |
| ● 11.6 Inspect sprocket segments condition                      | PASS |
| ● 11.7 Inspect track frame for cracks, lose or missing hardware | PASS |

## PM FRAME AND BODY

- |   |      |
|---|------|
| ● 12.1 Check panels for damage and security   | PASS |
| ● 12.2 Check access steps and walkway condition   | PASS |
| ● 12.3 Inspect boom condition – cracks, missing clamps, damaged pipes, excessive movement, lubrication  | PASS |
| ● 12.4 Inspect stick condition – cracks, missing clamps, damaged pipes, excessive movement, lubrication | PASS |
| ● 12.5 Inspect quick hitch condition and operation  | PASS |
| ● 12.6 Inspect bucket condition – cracks, wear, damage, mounts  | PASS |
| ● 12.7 Inspect GET condition and hardware   | PASS |

## PM ELECTRICAL SYSTEM

● 13.1 Check battery condition	PASS
● 13.2 Check battery terminal condition	PASS
● 13.3 Check battery security	PASS
● 13.4 Check battery box drain is clear	PASS
● 13.5 Check wiring condition and security	PASS

## PM GREASE SYSTEM

● 14.1 Check all points for acceptable lubrication	PASS
● 14.2 Inspect grease system operation	PASS
● 14.3 Check grease line condition	PASS
● 14.4 Refill grease tank	N/A
● 14.5 Lubricate bucket linkage	PASS
● 14.6 Lubricate blade linkage	PASS
● 14.7 Lubricate boom & stick linkage	PASS
● 14.8 Lubricate swing bearing	PASS

## PM OPERATOR STATION

● 15.1 Check all doors for correct opening and closing adjustments and operation	PASS
● 15.2 Inspect condition of door seals	PASS
● 15.3 Check window glass and seal condition	PASS
● 15.4 Check mirror condition and adjustments	PASS
● 15.5 Fill window washer reservoir	PASS
● 15.6 Inspect air con vents condition	PASS
● 15.7 Inspect seat belt and mounting hardware	PASS

● 15.8 Inspect seat condition, operation and mounting PASS

● 15.9 Replace cabin A/C filter N/A

## OIL SAMPLING

● 16.1 Engine NORMAL

## PM POST SERVICE INSPECTION CHECKS

● 17.1 All inspections have been completed and rectified as required NORMAL

● 17.2 All safety related defects have been repaired or reported NORMAL

● 17.3 All defects have been noted and reported NORMAL

● 17.4 All fluids are at correct level and drain plugs tight NORMAL

● 17.5 All oil samples have visually been inspected and any notable signs of contamination have been reported NORMAL

● 17.6 All replaced filters have been cut and inspected and photos added to CAT Inspect and reported to supervisor NORMAL

● 17.7 Machine has been recommissioned and ready for operation NORMAL

● 17.8 PM service notification marked off in Vision Link NORMAL

## DEFECTS IDENTIFIED

● 18.1 DEFECTS IDENTIFIED horn button and other buttons on l/h joystick worn (replaced 2 out of 3). engine belt has minor gash on side (replace at next service). Missing registration plate and fire extinguisher (theft from machine. Customer advised)

## OIL USED

● 19.1 Hydraulic oil 0



● 19.2 Engine oil	0
● 19.3 Slew oil	0
● 19.4 Gear oil	0
● 19.5 Coolant	0

● Site photo
● Site photo
● Site photo
● Site photo
● Site photo
● Site photo
● Site photo
● Site photo
● Site photo
● Site photo
● Site photo
● Site photo
● Site photo